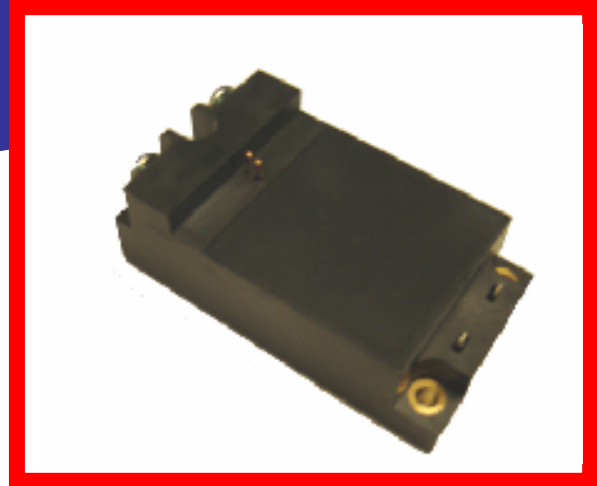


High Voltage High Current DC Solid State Contactor

Sensitron has developed a small footprint High Voltage and High Current DC Solid State Relay/Contactor. This device incorporates the latest state of the art technology to reduce the “on” state power losses and voltage drop to a minimum. The device is a true four terminal relay, not needing additional power sources for bias. This device uses robust magnetic isolation to achieve high isolation, reliability, and long life. Unlike opto-isolation techniques, this device will not degrade with time. The input control lead will accept any voltage from 4.6V to 36VDC.

Capability:

- Main DC Bus Switch
- DC Motor Bus Switch
- Battery Disconnect
- Bus Discharge
- DC Contactor



Features:

- 2000V Input to Output Isolation
- 600V Blocking, 50A Continuous Current
- 400A Pulsed
- -55° C to 100° C Base Plate
- Wide range DC Input Signal 4.6V to 36V
- True Four Terminal Operation
- Low “on” State Resistance .015 ohm
- Fast Turn On/Turn Off, less than 1 us
- High Current Terminals
- Four Point Mounting Plate
- Tjc- 1° C per Watt
- 1.4” x 2.6” x .5”

***MIL-STD-704 and MIL-STD-461
Compliant!***

***SENSITRON
SEMICONDUCTOR***